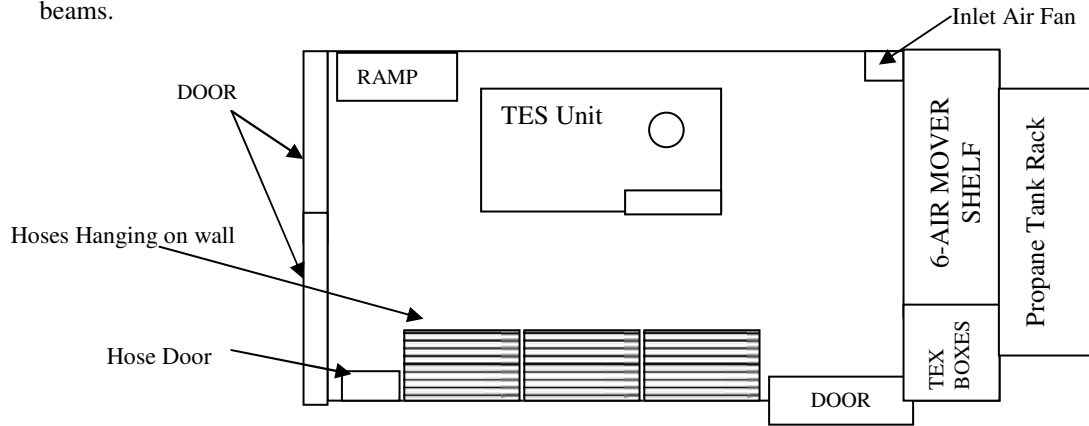
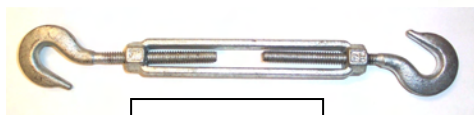


Install Trailer Floor Anchors

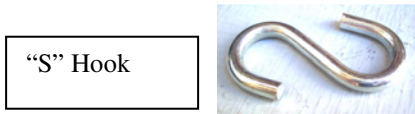
- 1) Determine the mounting location of TES unit in trailer design. TES must be at least 6” away from trailer wall. Place TES and other accessories to balance load and reduce tongue weight. Make sure the section of roof directly above the TES unit exhaust outlet is relatively flat and TES is positioned so exhaust outlet will be centered between roof cross beams.



- 2) Use the turnbuckle to measure the distance from the eyebolt on the TES unit mounting foot to the floor position for placing the floor anchor. Use additional fitting such as an “S” Hook to extend the length of the turnbuckle as needed.



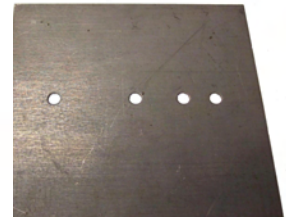
Turnbuckle



“S” Hook

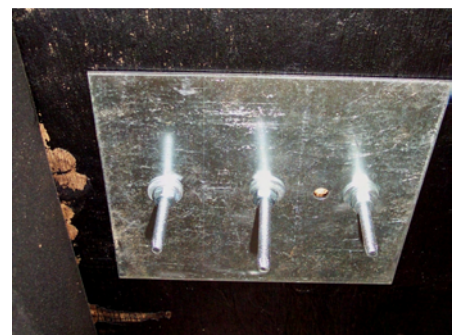


Floor Anchor
NM4328



Back-up Plate
NM4329

- 3) Reposition TES unit as needed to assure that floor anchor position will be away from beams and other obstructions under the trailer. While it is preferred that one bolt of the floor anchor goes through a beam for additional support, the required position, sealed beams and obstructions may not allow the use of beams for support. The wide backup plates provide a high degree of support for floor anchors installed in the plywood floor.
- 4) Once the position of the floor anchor is determined, use a 3” hole saw to drill a 3” hole for the center of the floor anchor. Use a 1/4” drill to drill the end holes.
- 5) Place the floor anchor into the 3” hole, align the end holes and insert the three 1/4” bolts.
- 6) Place the backup plate under the floor and secure the floor anchor assembly to the floor using 1/4” flat washers, lock washers and nuts.



- 7) Place the support stand under the TES unit.

Support Stand
AT78



- 8) Connect the turnbuckles to the eyebolts on the four corners of the TES unit. Connect the other end of the turnbuckles to the floor anchors and tighten the turnbuckles to secure the TES unit to the trailer floor.

